



Trane AMS III

is a new generation inverter home air conditioning system.




Ingersoll Rand (NYSE:IR) advances the quality of life by creating comfortable, sustainable and efficient environments. Our people and our family of brands—including Club Car®, Ingersoll Rand®, Thermo King® and Trane®—work together to enhance the quality and comfort of air in homes and buildings; transport and protect food and perishables; and increase industrial productivity and efficiency. We are a global business committed to a world of sustainable progress and enduring results.

www.ingersollrand.co.in | www.trane.com



© 2014 Trane All rights reserved

We are committed to using environmentally conscious print practices that reduce waste. 



Variable Refrigerant Systems

Advanced Multi-Split System III

Made for the ultimate comfort.



You asked if an air conditioning system can be both green and also provide the highest level of comfort and silent operation. We heard you. Now AMS III by Trane; offers the best of both worlds – it is the new green with true energy savings, yet the most energy efficient and quietest air conditioning system.

Trane AMS III is a new generation inverter home air conditioning system.

Adopting the latest innovation and cutting-edge technology, AMS III can be installed across a wide spectrum of home-types. From high-end apartments to luxury villas, the elegant and slim AMS III design is the perfect fit anywhere.

With AMS III, you are assured of a system that is highly reliable and supported by Trane's international after sales network, giving you, peace of mind, while helping you save time, energy and cost. Moreover, with the green refrigerant (R410A), you are doing your bit for the environment too.

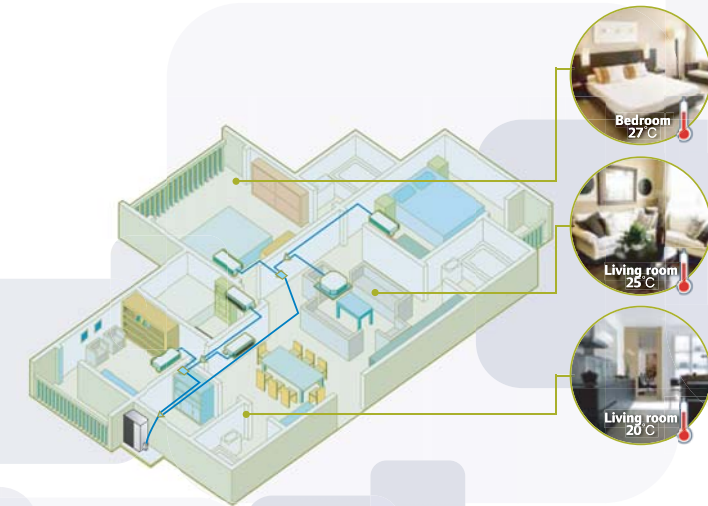
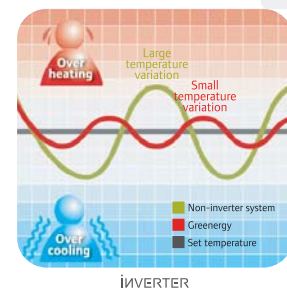
Features and Benefits

We care about every aspect of your home comfort.

The AMS III is designed to provide superior comfort and a healthy living environment. You just have to experience it for yourselves to enjoy these amazing features:

- **Precise Temperature Control**

Using electronic expansion valves, the unit can automatically adjust and rationally allocate refrigerant flow to keep the system at optimal status. The DC inverter utilizes 180° Sine Wave Technology to perfectly control the frequency of ON/OFF mode, thus enabling the load variation from 10% to 120% of ODU capacity. This combination seamlessly keeps the indoor temperature at a remarkable $\pm 0.5^{\circ}\text{C}$ of the set temperature.



- **Flexible Piping installation**

The optimised heating and cooling design allows the refrigerant piping length to be as long as 145m, with an elevation of 30m between the indoor and the outdoor unit.

- **Cooling and Heating**

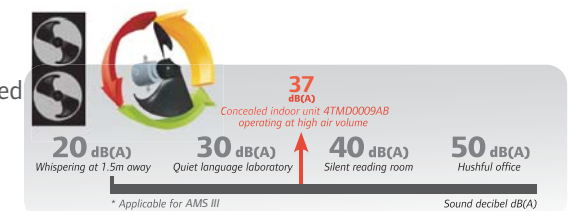
AMSIII has a unique design which enables it to provide seamless cooling or heating options depending on the seasonality and location of usage, which leads to the ultimate comfort.

- **Multiple Indoors with Individual control**

AMS III – the latest technology can connect upto 9 indoor units from a wide range of high walls, concealed, cassette and convertible ACs. Moreover, all these can be controlled individually and can be set at different temperatures to suit individual comfort and reduce wastage.

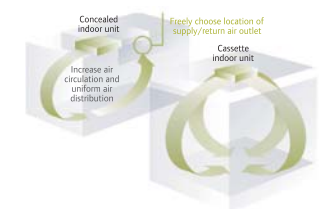
- **Ultra-Quiet Operating Environment**

Our Condensing fans and inlet cone structure of outdoor units are optimised to reduce noise level substantially. The concealed indoor unit is also redesigned to keep fan speed as low as possible while ensuring cooling capacity to create a tranquil and cool home environment.



- **Comfortable Air Distribution**

By offering flexibility in the location of the supply/return outlets of the concealed unit, homeowners avoid air circuit blockage and increases air circulation. On top of that, the Cassette indoor unit has a four-way wide vertical air distribution. Such design functions ensure optimal comfort for you.



- **Green R410A Refrigerant**

Unlike R22 which is used in most air conditioning systems, AMS III uses the R410A refrigerant that is more energy efficient with zero ozone depletion potential (ODP) and is more environmentally sustainable.



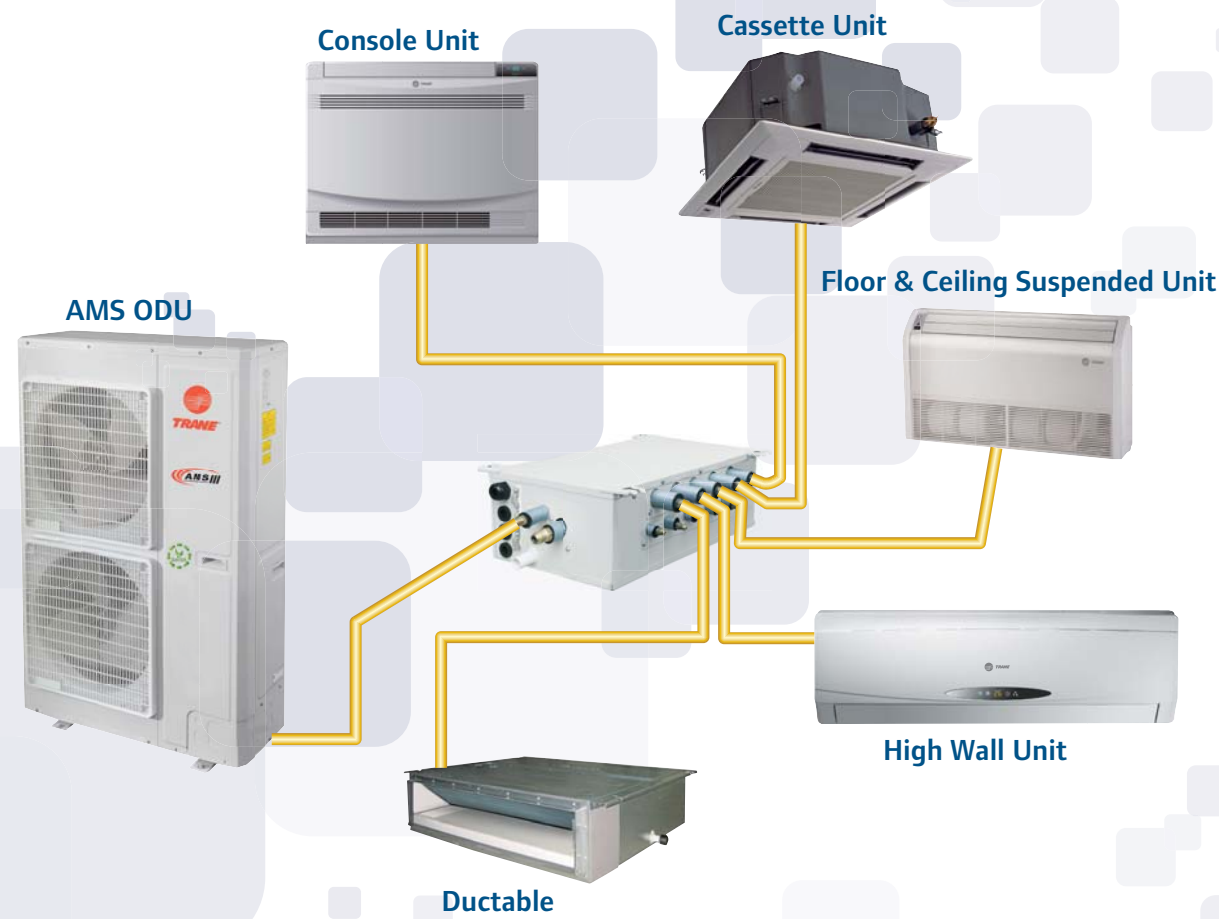
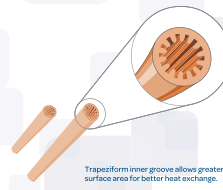
Turbo Cooling

The turbo cooling function enables the unit to operate under high frequency so that the cooling capacity increases 20% instantaneously to reach the set room temperature sooner.



Inner Grooved Copper Pipes

The inner grooved pipes have a greater surface area and allow more refrigerant to pass through it leading to better heat exchange.



Indoor Units	Ton				
	0.7	1.0	1.5	1.8	2.0
Cassette		•	•		•
Concealed	•	•	•	•	•
High wall	•	•	•		•
Console	•	•	•		
Floor & Ceiling Suspended	•	•	•		•

Outdoor Units	HP						
	1.8	2.5	3.0	4.0	4.5	5.0	6.0
Single Phase	•	•	•	•	•	•	•
Three Phase						•	•

Cassette



Model Name		4TMC0012AB	4TMC0018AB	4TMC0024AB	
Power supply		V-ph-Hz	220-240-1-50	220-240-1-50	220-240-1-50
Capacity	Cooling	kW	3.5	4.5	7.1
		Btu/hr	11,900	15,400	24,200
Capacity	Heating	kW	4.0	5.0	8.0
		Btu/hr	13,600	17,100	27,300
Rated Power		W	50	50	100
Rated Current		A	0.23	0.23	0.4
Air Flow		m3/h	600	600	1180
Sound Level (H/ L)		dB(A)	46/42	46/42	39/35
Indoor unit	Dimension (WxDxH)	mm	570x570x230	570x570x230	840x840x240
	Packing (WxDxH)	mm	851x731x325	851x731x325	963x963x325
	Net/Gross weight	Kg	18/23	18/23	28/35
Panel	Dimension (WxDxH)	mm	650x650x50	650x650x50	950x950x60
	Packing (WxDxH)	mm	733x673x117	733x673x117	1043x1028x130
	Net/Gross weight	Kg	2.5/3.5	2.5/3.5	6.5/10
Refrigerant piping	Liquid side/ Gas side	mm	Φ6.35/Φ9.52	Φ6.35/Φ12.7	Φ9.52/Φ15.9
Drainage Water Pipe Outer Diameter		mm	ODΦ31	ODΦ31	ODΦ31

High Wall



Model Name		4TMW0009AB	4TMW0012AB	4TMW0018AB	4TMW0024BB	
Power supply		V-ph-Hz	220-240-1-50	220-240-1-50	220-240-1-50	
Capacity	Cooling	kW	2.6	3.37	5.3	6.45
		Btu/hr	8,900	11,500	18,100	22,000
Capacity	Heating	kW	2.6	3.5	5.8	7.1
		Btu/hr	9,000	12,000	19,800	24,200
Rated Power		W	20	40	55	65
Rated Current		A	0.13	0.21	0.31	0.31
Air Flow		m3/h	500	630	850	1000
Sound Level (H/ L)		dB(A)	37/28	39/30	46/36	48/32
Indoor unit	Dimension (WxDxH)	mm	820x174x265	873x175x268	940x200x298	1018x223x315
	Packing (WxDxH)	mm	875x339x267	931x348x272	1013x288x395	1083x395x313
	Net/Gross weight	Kg	9/12	10/13	13/16	15.5/20.5
Refrigerant piping	Liquid side/ Gas side	mm	Φ6.35/Φ9.52	Φ6.35/Φ9.52	Φ6.35/Φ12.7	Φ9.52/Φ15.9
Drainage Water Pipe Outer Diameter		mm	ODΦ28	ODΦ28	ODΦ16	ODΦ17

Floor & Ceiling Suspended



Console



AMS ODU



A Series

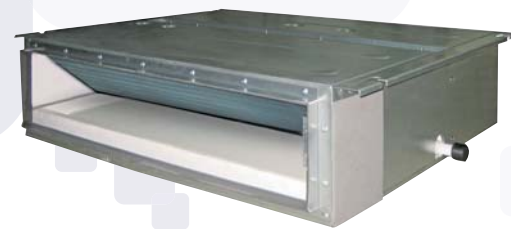


S Series

Floor & Ceiling Suspended				Console			
Model Name	4TMS0009AB	4TMS0012AB	4TMS0018AB	4TMS0024AB	4TML0009AB	4TML0012AB	4TML0018AB
Power supply	V-ph-Hz	220-240-1-50	220-240-1-50	220-240-1-50	220-240-1-50	220-240-1-50	220-240-1-50
Capacity	Cooling	kW	2.5	3.5	5	7.1	
		Btu/hr	8,500	11,900	17,100	24,200	
Heating	kW	2.8	3.9	5.5	8.0		
	Btu/hr	9,600	13,100	18,800	27,300		
Rated Power	W	55	55	110	110		
Rated Current	A	0.3	0.3	0.5	0.5		
Air Flow	m ³ /h	650	650	950	1250		
Sound Level (H/L)	dB(A)	40/36	40/36	45/40	48/44		
Indoor unit	Dimension (WxDxH)	mm	1220x700x225	1220x700x225	1220x700x225	1220x700x225	
	Packing (WxDxH)	mm	1343x823x315	1343x823x315	1343x823x315	1343x823x315	
	Net/Gross	Kg	40/50	40/50	40/50	45/54	
Refrigerant piping	Liquid side/ Gas side	mm	Φ6.35/Φ9.52	Φ6.35/Φ9.52	Φ6.35/Φ12.7	Φ9.52/Φ15.9	
Drainage Water		mm	ODΦ26	ODΦ26	ODΦ26	ODΦ26	

A Series				S Series	
Model Name	4TMH0018AB	4TMH0024AB	4TMH0028AB	4TMH0036AB	4TMH0042AB
Capacity	HP	1.8 HP	2.5 HP	3 HP	4 HP
Power supply	V-ph-Hz	220-240-1-50	220-240-1-50	220-240-1-50	220-240-1-50
Cooling	Capacity	kW	5.0	7.0	8.0
	Power Input	W	17,100	23,900	27,300
	EER	W/W	3.23	2.85	3.21
Heating	Capacity	kW	5.6	7.7	9.3
	Power Input	W	19,100	26,300	31,700
	COP	W/W	3.61	3.01	3.60
Outdoor Air Flow	m ³ /h	3200	4000	4000	5200
Sound Level	dB(A)	56	58	58	60
Fin Type		Hydrophilic Aluminium			
Outdoor unit	Dimension (WxDxH)	mm	955x396x700	980x427x790	980x427x790
	Packing (WxDxH)	mm	1026x455x735	1080x485x840	1080x485x840
	Net/Gross weight	Kg	50/55	68/73	69/74
Charged refrigerant type and amount	type and amount	Kg	R410A/ 1.4	R410A/ 2	R410A/ 2.2
	Liquid side/ Gas side	mm	Φ6.35/ Φ9.52	Φ6.35/ Φ9.52	Φ6.35/ Φ9.52
Refrigerant Piping	Total pipe length	m	20	20	70
	Max Equivalent Pipe Length	m	10	10	20
	Max Level between ID's	m	10	10	7.5
	Max Level between OD & ID	m	10	10	15
	Max. Amount of ID's connected to OD		2	2	4
Ambient temp. range - Cooling	°C	-15°-48°C	-15°-48°C	-15°-48°C	-15°-48°C
Ambient temp. range - Heating	°C	-15°-27°C	-15°-27°C	-15°-27°C	-15°-27°C

Ductable



Model Name	4TMD0009AB	4TMD0012AB	4TMD0018AB	4TMD0021AB	4TMD0024AB
Power supply	V-ph-Hz	220-240-1-50	220-240-1-50	220-240-1-50	220-240-1-50
Capacity	Cooling	kW	2.5	3.5	5
		Btu/hr	8,500	11,900	17,100
Heating	kW	2.8	3.9	5.5	6.6
	Btu/hr	9,600	13,100	18,800	22,500
Rated Power	W	65	75	80	110
Rated Current	A	0.28	0.31	0.41	0.5
Air Flow	m ³ /h	450	500	700	1000
Sound Level (H/L)	dB(A)	37/31	39/32	41/33	42/34
Indoor unit	Dimension (WxDxH)	mm	700x615x200	700x615x200	900x615x200
	Packing (WxDxH)	mm	893x743x305	893x743x305	1123x743x305
	Net/Gross weight	Kg	22/27	23/29	27/36
Refrigerant piping	Liquid side/ Gas side	mm	Φ6.35/Φ9.52	Φ6.35/Φ9.52	Φ6.35/Φ12.7
Drainage Water Pipe Outer Diameter		mm	ODΦ26	ODΦ26	ODΦ26

S Series					
Model Name	4TMH0042SB	4TMH0048SB	4TMH0056SB	4TMH0048SD	4TMH0056SD
Capacity	HP	4.5 HP	5 HP	6 HP	5 HP
Power supply	V-ph-Hz	220-240-1-50	220-240-1-50	220-240-1-50	380-415-3-50
Cooling	Capacity	kW	12.3	14.0	15.5
	Power Input	W	42,000	47,800	52,900
	EER	W/W	4,100	4,900	5,300
Heating	Capacity	kW	12.5	15.5	17.0
	Power Input	W	42,700	52,900	58,000
	COP	W/W	3.38	3.60	3.95
Outdoor Air Flow	m ³ /h	6400	6400	7000	
Sound Level	dB(A)	57	57	57	
Fin Type		Hydrophilic Aluminium			
Outdoor unit	Dimension (WxDxH)	mm	900x375x1350	900x375x1350	900x375x1350
	Packing (WxDxH)	mm	980x440x1383	980x440x1383	980x440x1383
	Net/Gross weight	Kg	116/125	116/125	116/125
Charged refrigerant type and amount	type and amount	Kg	R410A/ 4.95	R410A/ 4.95	R410A/ 4.95
	Liquid side/ Gas side	mm	Φ9.52/Φ15.9	Φ9.52/Φ15.9	Φ9.52/Φ15.9
Refrigerant Piping	Total pipe length	m	145	145	145
	Max Equivalent Pipe Length	m	70	70	70
	Max Level between ID's	m	15	15	15
	Max Level between OD & ID	m	30	30	30
	Max. Amount of ID's connected to OD		6	9	9
Ambient temp. range - Cooling	°C	-15°-48°C	-15°-48°C	-15°-48°C	
Ambient temp. range - Heating	°C	-15°-27°C	-15°-27°C	-15°-27°C	